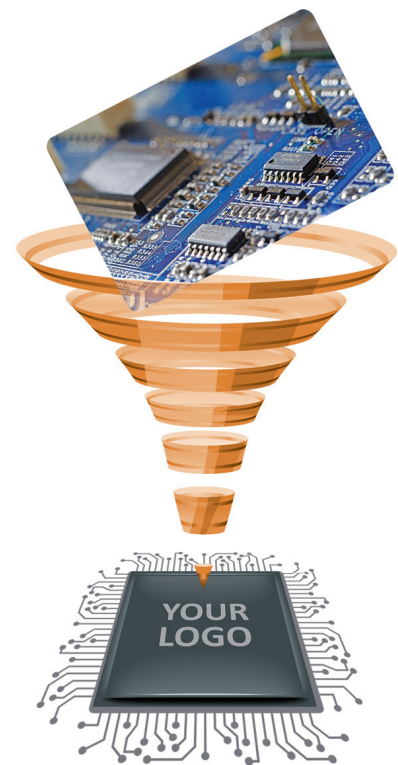




Exclusive ASIC supply

One-stop-shop ASIC solutions

- Excellent track record in innovative and high-complex ASICs
- Every ASIC is made for and sold to 1 single customer only
- First-time-right methodology and zero defect strategy
- Automotive ASIC developments according ISO26262
- ISO13485 certified ASICs for medical implants and wearables
- Industrial ASIC design and supply IEC61508 compliant
- Ultra-low-power custom ASICs for consumer applications
- In-house production test (ATE) development and product engineering

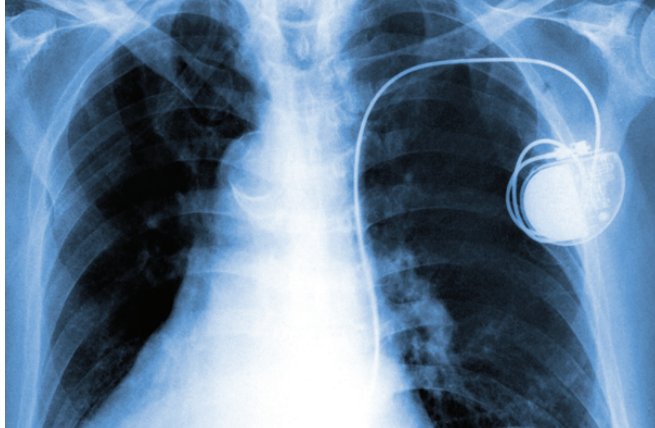


“We build longterm relationships with our customers by supplying innovative and cost effective ASICs to support their product roadmap.”

ICSense CEO, Bram De Muer

www.icsense.com





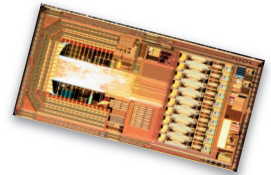
Automotive

- Battery & power management IC
- Current sensing ASIC
- Communication (CAN, LIN, I2C/I3C, SPI)
- Pressure sensor read-out
- Motor control driver
- Hall / xMR sensor read-out ASIC
- Fuel injection driver, ...



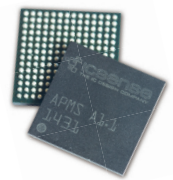
Medical

- Ultra low-power NFC interface
- Power management IC for implants & hearing aids
- Neuromodulation (stimulation & recording)
- Li-ion battery management
- Wireless charging and data interface
- X-ray imaging chipset
- ECG, bio-potential read-out IC
- Lab-on-chip read-out, ...



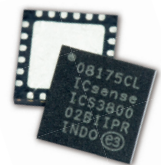
Consumer

- HV MEMS digital speaker
- ULP pressure sensor
- Gas sensor interface
- 3-axis magnetic compass
- Accelerometer / Hall sensor interface
- Mirror driver ASIC
- Single-Input-Single-Output (SIMO)
- DC-DC converter, ...



Industrial

- Time-of-Flight (ToF) read-out IC
- Pressure, flow, US sensor interface
- Inductive proximity sensor
- Passive RFID and NFC tags
- Wheatstone bridge
- Motor control drivers
- Embedded digital processing, ...



Further details on
ASIC developments

www.icsense.com/exclusive-supply



ICSENSE NV
Gaston Geenslaan 14
B-3001 Leuven (Belgium)

Tel. +32-16-58 97 00
supply@icsense.com
www.icsense.com

[linkedin.com/company/icsense](https://www.linkedin.com/company/icsense)